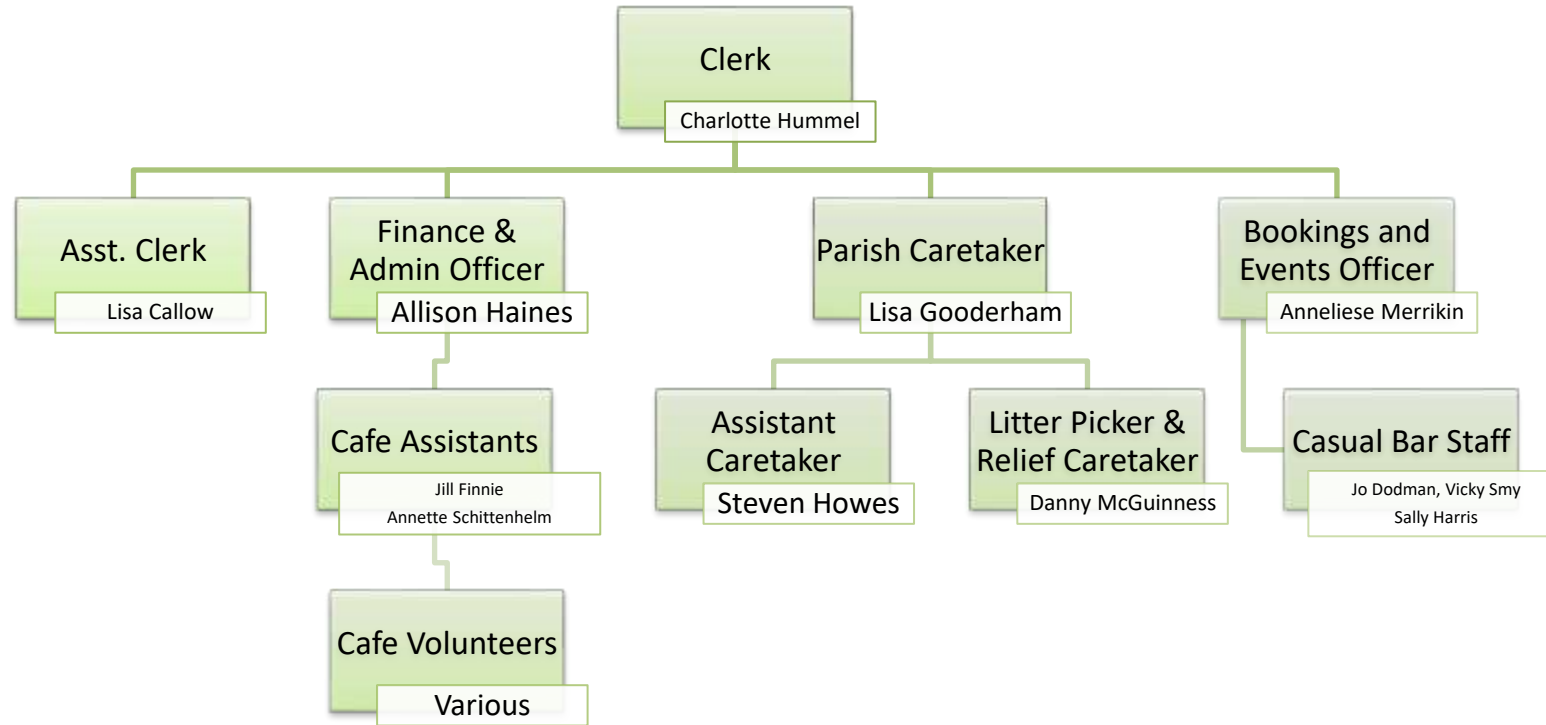


Staffing Structure:



Staff Hours:

Administrative	Practical
Clerk (37)	Caretaker (37)
Assistant Clerk (25)	Assistant Caretaker (20)
Parish Officer – Finance and Admin (16)	Litter Picker & Relief Caretaker (10)
Parish Officer – Bookings and Events (18)	Café Assistant (40) Combined
<b>TOTAL HOURS 96</b>	<b>TOTAL HOURS 107</b>